

All Weather Speaker

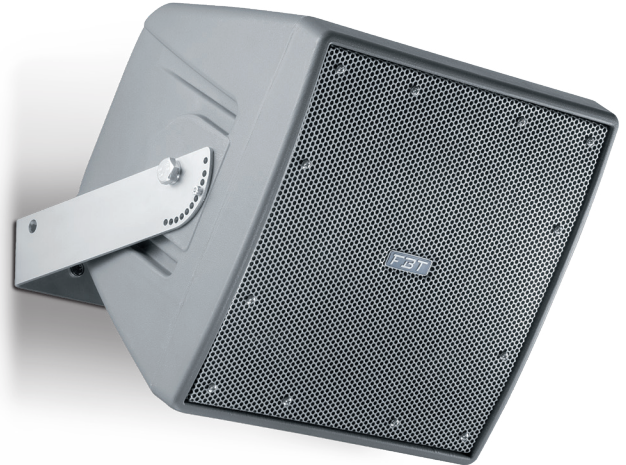


MAIN APPLICATIONS

- Convention centers
- Athletic fields
- Stadiums
- Theme parks
- Swimming pools
- Cruise ships
- Malls
- Ballrooms
- Outdoor background music

MAIN FEATURES

- Subwoofer
- Sturdy molded polyethylene curved enclosure
- 14" woofer with 3" coil
- Line transformer (optional)
- 4 wires cable to select the power tapping
- IP55 weather resistant
- Standard grey finish RAL 7011
- Completely manufactured in Italy



DESCRIPTION

The SHADOW 114S is a weatherproof subwoofer loudspeaker system offering substantial power and efficiency for a variety of professional indoor or outdoor applications. The low frequency transducer is a 14" woofer with a 3" voice coil. An optional transformer is also available providing impedance matching to 100V lines with 300W power. The cabinet is a single piece rotational moulded in polyethylene, fully UV protected. The cabinet is equipped with a stainless steel Ubracket. The grille is in custom perforated stainless steel with 3 layers of protection. The SHADOW 114S meets the requirements of IP55 code (International Protection Rating).

TECHNICAL SPECIFICATIONS

GENERAL

Code	114S	36196
	114ST	37943
Configuration	way	1
Low frequency woofer	inch	14 - 3 coil
High frequency driver	inch	---

ACOUSTIC SPECIFICATIONS

Frequency response	(@-6dB)	60Hz - 400Hz
Crossover frequency	kHz	External
Sensitivity (@1W,1m)	dB	97
MAX SPL (cont/peak)	dB	125.5 / 129.5
Dispersion	H x V	Omnidirectional
Recommended HP filter	Hz - dB oct.	40 - 24

INPUTS & OUTPUTS

Connectors		4 wire cable
------------	--	--------------

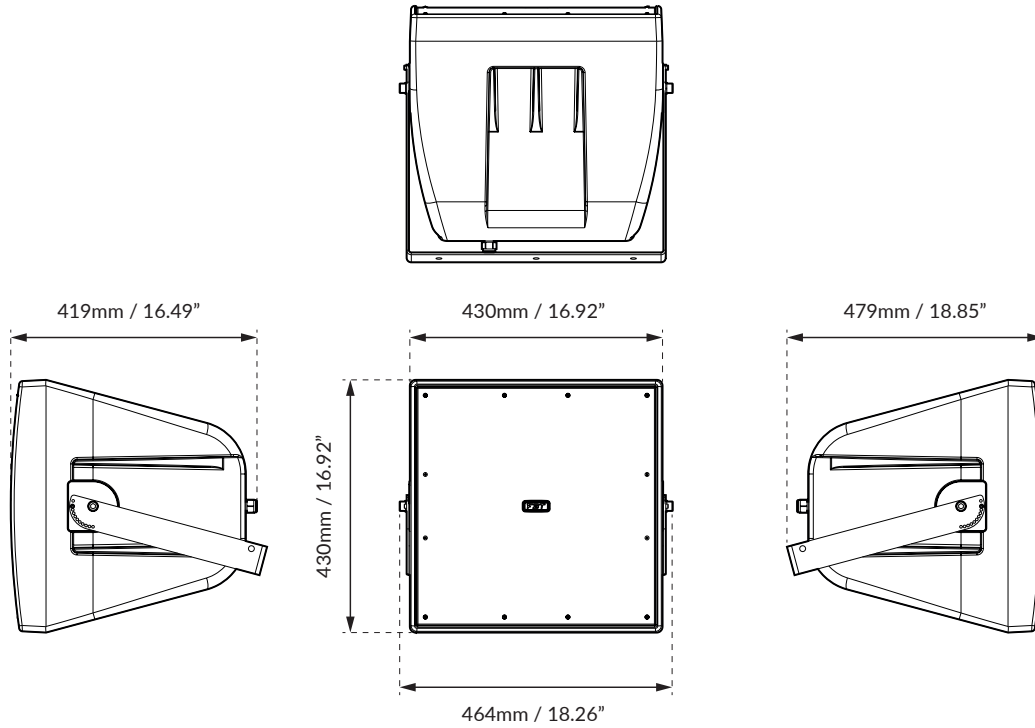
AMPLIFIER

Transformer (optional)	V / W	100 / 300
Recommended amplifier	W RMS	700
Long term power	W	350
Short term power (IEC 268-5)	W	1400
Nominal impedance	Ohm	8

MECHANICAL SPECIFICATIONS

Material	Cabinet	Polyethylene
	Grille	Stainless steel
Net dimensions (WxHxD)	mm	464 x 430 x 479
	inch	18.27 x 16.93 x 18.86
Transport dimensions (WxHxD)	mm	585 x 590 x 510
	inch	23.03 x 23.23 x 20.08
Net weight	kg	15.50 (17.50)
	lb	34.17 (38.58)
Transport weight	kg	20 (20.30)
	lb	44.09 (44.75)

DIMENSIONAL DRAWING



INCLUDED ACCESSORY

FREQUENCY RESPONSE DIAGRAM

